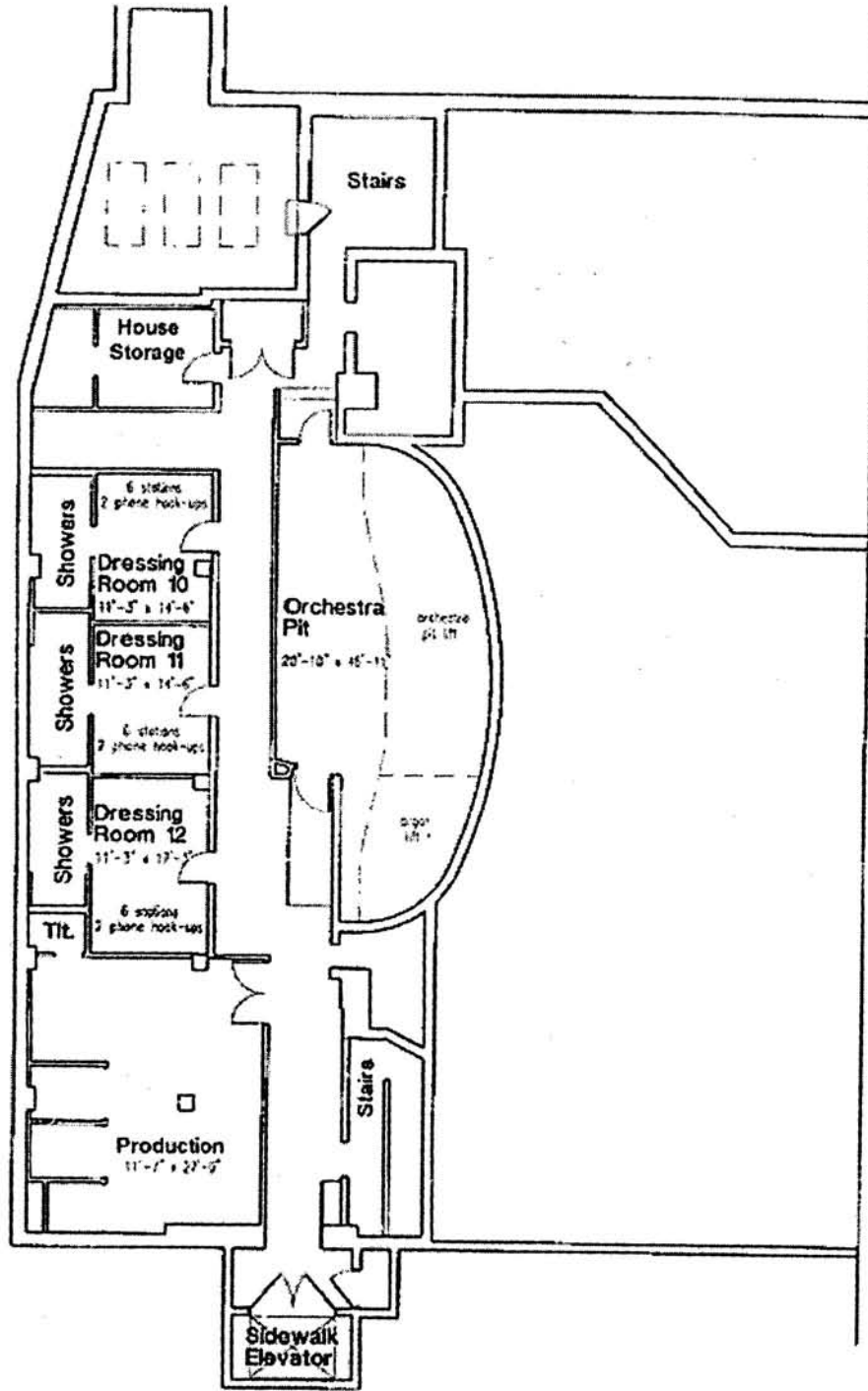


LINE SET	DISTANCE	PURPOSE	WEIGHT	NOTES
	0' - 0"	PLASTER		
1	1' - 9"	VALANCE		
2	2' - 4"	MAIN RAG		
3	2' - 10"			
4	3' - 4"			
5	3' - 10"			
6	4' - 4"			
7	4' - 10"			
8	5' - 4"			
9	5' - 10"			
10	6' - 4"	1st. HOUSE ELECTRIC w/ RACEWAY		
11	6' - 10"			
12	7' - 4"			
13	7' - 10"			
14	8' - 4"			
15	8' - 10"			
16	9' - 4"			
17	9' - 10"			
18	10' - 4"			
19	10' - 10"			
20	11' - 4"			
21	11' - 10"			
22	12' - 4"			
23	12' - 10"			
24	13' - 4"	2nd. HOUSE ELECTRIC w/ RACEWAY		
25	13' - 10"			
26	14' - 4"			
27	14' - 10"			
28	15' - 10"			
29	16' - 4"			
30	16' - 10"			
31	17' - 4"			

32	17' - 10"			
33	18' - 4"			
34	18' - 10"			
35	19' - 4"			
36	19' - 10"			
37	20' - 4"			
38	20' - 10"	3rd. HOUSE ELECTRIC w/ RACEWAY		
39	21' - 4"			
40	21' - 10"			
41	22' - 4"			
42	22' - 10"			
43	23' - 4"			
44	24' - 0"			
45	24' - 4"			
46	24' - 10"			
47	25' - 4"			
48	25' - 10"			
49	26' - 4"			
50	26' - 10"			
51	27' - 4"			
52	27' - 10"			
53	28' - 10"			CAN NOT KICK SHIVES
54	29' - 4"			CAN NOT KICK SHIVES
55	31' - 10"			
56	32' - 3"			
57	32' - 8"			
58	33' - 1"			
59	33' - 6"			
60	33' - 11"			
61	34' - 4"			USEABLE BUT VERY TIGHT
62	34' - 9"			PULL LINE BEHIND COLUMN(VERY TIGHT)
63	36' - 4"			PULL LINE BEHIND COLUMN(VERY TIGHT)
64	36' - 10"			PULL LINE BEHIND COLUMN(VERY TIGHT)

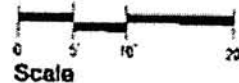
65	37' - 4"			USEABLE BUT VERY TIGHT
66	37' - 10"			
67	38' - 4"			
68	38' - 10"			
69	39' - 4"			
70	39' - 10"			
71	40' - 4"			
72	40' - 10"			
73	41' - 4"			
74	41' - 10"			
75	42' - 4"			
76	42' - 10"			
77	43' - 4"			
78	43' - 10"			
79	44' - 4"			
80	44' - 10"			
81	45' - 4"			
82	45' - 10"			
83	46' - 4"			
84	46' - 10"			
85	47' - 4"			
86	47' - 10"			
87	48' - 4"			
88	48' - 10"			
89	49' - 4"			
90	49' - 10"			

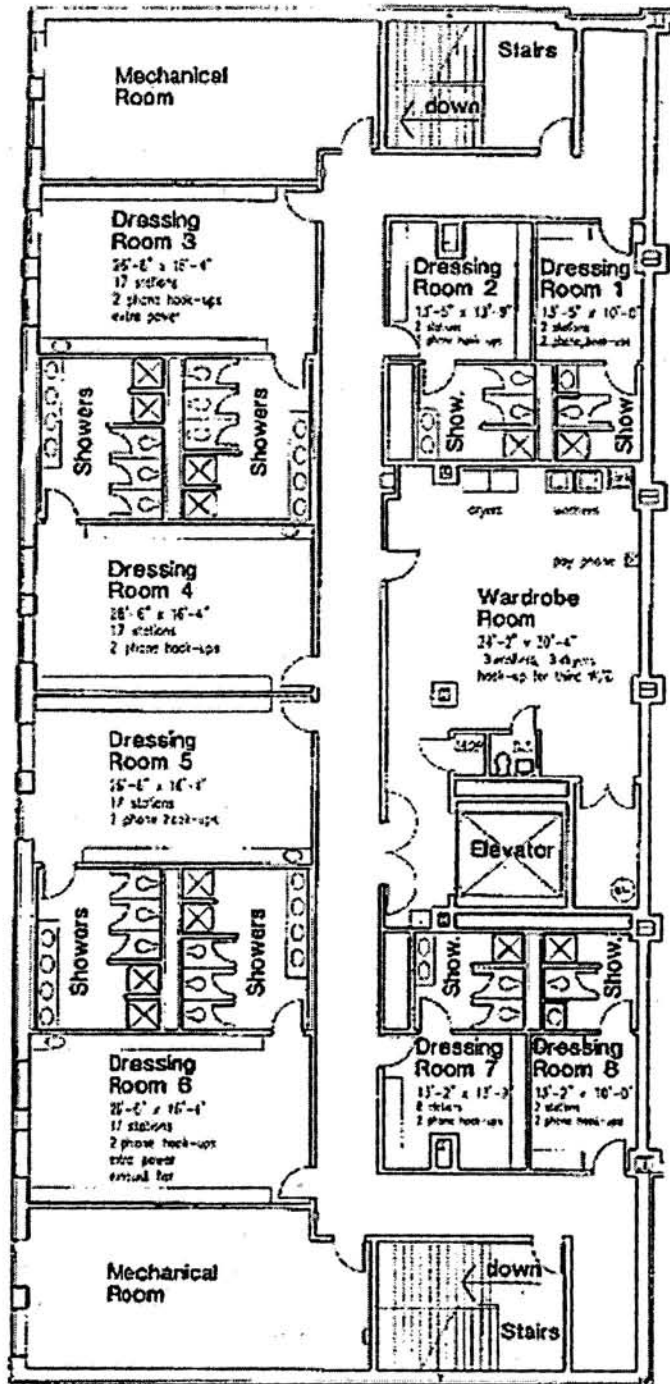


**Basement Level
Dressing Rooms**
(below stage)



North





Second Level - Dressing Rooms
(above stage)

